

**RISK LOGGER**  
for monitoring risk situations.

**MONILOG®**  
RISK LOGGER



**TRANSPORT  
RISK**



**STORAGE  
RISK**



**OPERATIONAL  
RISK**

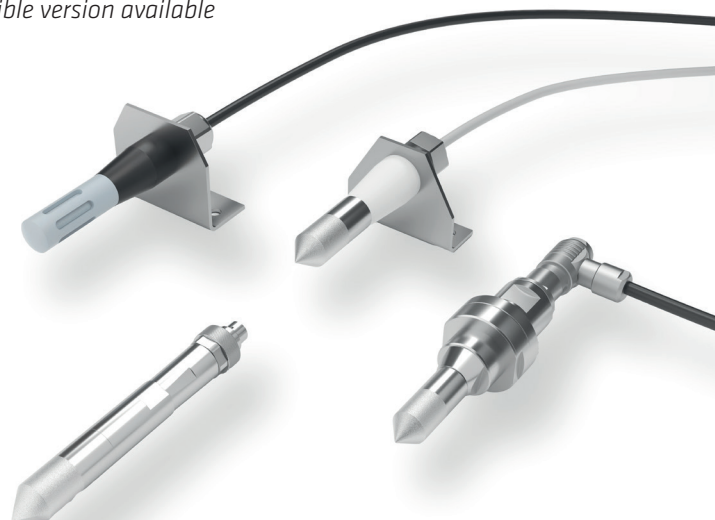


**MONILOG®**

## **Combi-sensors** *for data loggers*

**ACCESSORY FOR ENDAL CURVE AND SHOCK DISPLAY CURVE PLUS**

- + Temperature, air humidity and pressure measurement in one sensor
- + Suitable for the data loggers MONILOG® EnDaL curve and MONILOG® ShockDisplay curve plus
- + Four designs, from stainless steel to plastic, clean room compatible version available
- + High precision and long-term stability
- + Integrated measurement electronics
- + Factory calibration including certificate
- + Compact, robust, customised special solutions



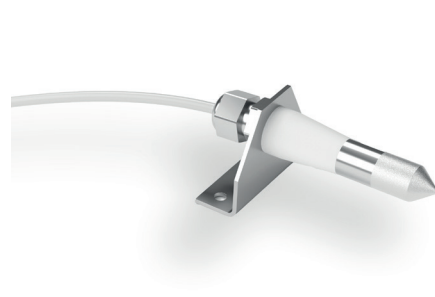
## ADDITIONAL SENSORS – MOUNTED DIRECTLY ON THE DEVICE OR EXTERNALLY

The MONILOG® combi-sensor enables temperature, humidity and pressure measurement in one sensor. ➤ The data loggers EnDaL curve and ShockDisplay curve plus can be supplemented as additional external sensors. ➤ They are either plugged directly into the device or mounted externally. ➤ With integrated measurement electronics, the combi-sensors can transmit the recorded values up to 40 m, in the variant with a pressure sensor up to 10 m, to the data loggers. ➤ Four standard designs are available for various uses, e.g. for the transport of large transformers: Here, compressed air or nitrogen prevents particles or moisture from entering the internal active part of the transformer. ➤ The combi-sensor monitors pressure and air

humidity and records changes during transport or storage. ➤ With transport data loggers, combined with combi-sensors, the packaging and logistics of climatically sensitive products can be monitored and optimized, including dew point monitoring and condensation control. ➤ Or they document compliance with logistics regulations when transporting highly sensitive optical systems or lithography systems. ➤ The combi-sensors have a long-term stability and their measurements are extremely precise even under extreme conditions. ➤ They are supplied calibrated, with a factory certificate, and they can be used immediately - also in customised designs.



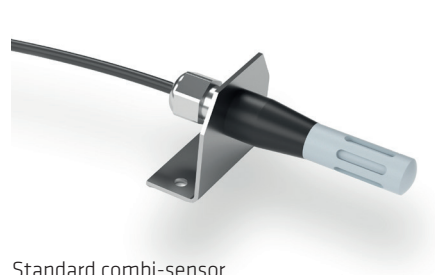
Screw-in stainless steel sensor



Combi-sensor vi - clean room version made of PTFE / sintered filter cap



Mounting sensor - to be installed on the data logger



Standard combi-sensor

### Technical data of MONILOG® Combi-sensor

Temperature measurement:	-40°C to +85°C, resolution 0,1 K, accuracy ±1 K
Humidity measurement:	0.2 to 100% RH, 0.1 % RH resolution, accuracy ±3 %RH (20 – 80 % RH), ±5 %RH (0 – 100 % RH)
Pressure measurement:	26 to 1.260 mbar, ±1 mbar (T=25°C), ±2 mbar (0°C to +80°C)
Power supply:	5 V, 20 mA directly from EnDaL curve or ShockDisplay curve plus
Signals:	Special log for EnDaL curve or ShockDisplay curve plus
Use:	Special transport and overseas shipping, aerospace, test and trial sections, storage and packaging optimisation, agriculture, medicine, environmental engineering, art shipping